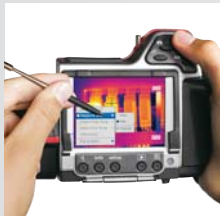


# T-Series InfraRed Cameras (200 x 150 IR Resolution)

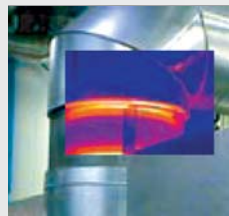
Upgradable Visible Light Cameras with Fusion (PIP), Touch-Screen Display, and Interchangeable Lens



Multifunction Touch Screen



Sketching on Screen



Picture-in-Picture (PIP) Fusion



120° lens rotation

## FLIR T200 and T250 Features

- Thermal Sensitivity up to 0.08°C @ 25°C
- 3.5" Touch-Screen LCD Display
- Upgradable Lenses and Functions
- Convenient 120° rotating lens
- Auto/Manual Camera Zoom up to 2X
- Picture-in-Picture Fusion
- Voice Comment Recording on Images
- Thumbnail Image Gallery

- **High Resolution IR Images** — 30,000 pixels (200 x 150) Infrared resolution
- **Visible Light Digital Camera** — 1.3MP (1280x1024) resolution with flash provides sharp images regardless of lighting conditions
- **Fusion Picture in Picture (PIP)** — Displays thermal image super-imposed over a digital image
- **2% Accuracy** — critical for condition monitoring of thermally sensitive targets
- **Thumbnail Image Gallery** — Allows quick search of stored images
- **1X-2X Continuous Zoom** — with auto/manual focus and optional interchangeable lenses for greater versatility
- **Rotating Lens** — Convenient rotating lens detents up to 120° for easy viewing angle
- **Li-Ion Rechargeable Battery** — Replaceable battery lasts >4hrs of continuous use
- **Laser LocatIR™ Pointer** — Pinpoints the hot spot on the IR image with the real physical target
- **Standard SD Card** — Stores more than 1000 Radiometric JPEG images
- **Includes** — SD Memory Card, Li-Ion rechargeable battery with 100-260V AC adaptor/charger, 2-bay battery charger, QuickReport software, USB Mini-B cable, video cable, sun shield, stylus pen & headset (T250), camera lens cap, and transport case

### FLIR T200 Additional Features

- 0.1°C Thermal sensitivity (NETD)
- Upgradable to FLIR T250 functions

### FLIR T250 Additional Features

- 0.08°C Thermal sensitivity (NETD)
- Voice comment recording on images and can be integrated onto reports
- Text from touch screen
- Image marker allows sketching on the screen
- Upgradable capabilities (see below for details)



### Multifunction Touch Screen

The 3.5" LCD high resolution touch screen plus stylus brings interactivity and user comfort to a new level. Easy to navigate menu allows you to quickly switch from different modes. The T250 also allows sketching and graphical marks on the imagery (T200 is upgradable).



### Upgradable Features and Functions

FLIR T200 and FLIR T250 have the flexibility to be upgraded to include advanced functions and features. These include Thermal Fusion capability (shown above) which is the blending of thermal image with a digital image in real-time and is scalable, IR Resolution up to 76,800 pixels (320x240), 8X zoom, resizable PIP, Video mode, 0.05°C Thermal sensitivity (NETD), and much much more!



### The Difference is Training

Get the most out of your FLIR IR camera investment with world-class instruction through the Infrared Training Center (ITC), the largest infrared applications training organization in the world. The ITC's Level 1 Infrared Thermography Training Course is geared to the new infrared camera user and focuses on its use for a variety of condition monitoring/predictive maintenance applications. Level 2 and Level 3 certificate courses for more advanced infrared training are also available. Courses are taught by certified instructors with extensive experience in a wide variety of infrared thermography and thermal imaging applications. ITC certifications are recognized by major professional organizations.



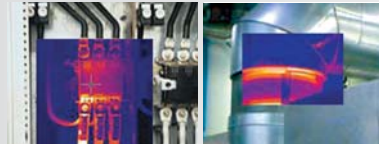
**QuickReport PC software** enables user to analyze Temperature of all thermal pixels of any FLIR Camera JPEG images



## Applications

### Picture-in-Picture Fusion

Allows for easier identification and interpretation of infrared images. This advanced technology enhances the value of an infrared image by allowing you to overlay it directly over the corresponding visible image. This functionality combines the benefits of both the infrared image and visual picture at the push of a button.

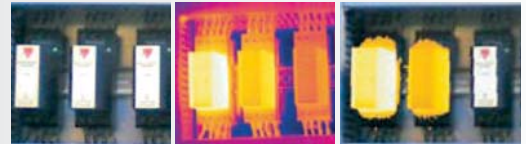


Electrical Panels

Boiler & Pipe Inspections

### Optional Thermal Fusion Function

This advanced technology enhances the value of an infrared image by allowing you to merge it directly with the corresponding visible image. The blending of the two images can be easily adjusted to suit any application such as electrical surveys, building diagnostics and mechanical inspections in real time and is scalable at a push of a button. This is an optional upgradable function for the T200 and T250 cameras.



Visual Image

Infrared Image

Thermal Fusion Image of an overheated circuit breaker

## FLIR T200 and T250 Specifications

Features	T200	T250
Temperature range	-4°F to 662°F (-20°C to 350°C)	-4°F to 662°F (-20°C to 350°C)
Image Storage	1000 Images (SD card memory)	1000 Images (SD card memory)
Imaging Performance / Image Presentation		
Field of view/min focus distance	25° X 19°/1.31ft (0.4m)	25° X 19°/1.31ft (0.4m)
Focus	Manual/Automatic	Manual/Automatic
Thermal sensitivity (N.E.T.D)	<0.1°C at 30°C	<0.08°C at 30°C
Detector Type - Focal plane array (FPA) uncooled microbolometer	200 X 150 pixels	200 X 150 pixels
Spectral range	7.5 to 13µm	7.5 to 13µm
Display	Built-in touch-screen 3.5" color LCD	Built-in touch-screen 3.5" color LCD
Image modes	Thermal/Visual/Fusion	Thermal/Visual/Fusion
Image annotation	—	Voice (60 sec); text from list, Sketch, image markers on IR/Visual
Lens	25° (optional 15° and 45° lenses available)	25° (optional 15° and 45° lenses available)
Specifications for both models		
Laser Classification/Type	Class 2/Semiconductor AlGaInP Diode Laser: 1mW/635nm (red)	
Set-up controls	Mode selector, color palettes, configure info to be shown in image, local adaptation of units, language, date and time formats, and image gallery	
Measurement modes	5 Spotmeters, 5 Box areas, Isotherm, Auto hot/cold spot	
Measurement correction	Reflected ambient temperature & emissivity correction	
Battery Type/operating time	Li-Ion/ >4 hours, Display shows battery status	
Charging system	In camera AC adapter/2 bay charging system	
Dimensions/Weight	4.2x7.9x4.9" (106x201x125mm)/1.94lbs (0.88kg), including battery	

## EXTECH Ordering Information

Part Number	Product Description	Price
FLIR T200	Thermal Imaging InfraRed Camera	
FLIR T250	Thermal Imaging InfraRed Camera with Voice & Image Marker/Sketch	
ACCESSORIES		
1196398	Li-Ion Rechargeable Battery	
1910399	AC Adapter Charger (110-240V, U.S. Plug)	
1910490	Cigarette Lighter Adapter Kit, 12VDC (1.2m cable)	
1196474	2-Bay Battery Charger including Power Supply (U.S. plug)	
1196960	Lens Wide Angle 45° with case	
1196961	Lens Telephoto 15° with case	
1124544	Neck Strap	
1124545	Camera Pouch	
CERTIFICATION TRAINING		
ITC LEVEL 1	ITC Level 1 Certification Training per attendee	